

FIRING TEMPERATURES

The Greek letter Delta, or 'Δ', is the commonly used symbol for the word "cone." During firing, cones soften and melt as they are heated, and gravity causes them to bend. It usually takes 15 to 22 minutes for cones to bend fully once they begin melting.

Cone	°F	°C	Common Firing Temperatures
022.....	1094	590	
021.....	1143.....	617	
020.....	1180	638	
019.....	1265	685	Mother-of-Pearl
018.....	1337.....	725.....	Gold, Lustres, China Paints, Decals, Enamel
017	1386	752	
016.....	1443	784	
015.....	1485	807	
014.....	1528	831.....	Glass Fusing
013.....	1578.....	859	
012.....	1587.....	864	
011.....	1623	884	
010	1641.....	894	
09.....	1693	923	
08.....	1751.....	955	Soft Bisque for Raku Work
07	1803	984	
06.....	1830	999.....	Hobby Ceramic Glazes
05.....	1915.....	1046.....	Hobby Ceramic Glazes
04.....	1940	1060.....	Hobby Ceramic & Pottery Bisque
03.....	2014.....	1101	(for Δ6 - Δ10 Clay)
02.....	2048	1120	
01.....	2079.....	1137	
1.....	2109.....	1154.....	Sanitary Ware Glaze Firing
2.....	2124.....	1162.....	Sanitary Ware Glaze Firing
3.....	2134.....	1168	
4.....	2167	1186	
5.....	2185.....	1196.....	Stoneware Glazes (beginning of range)
6.....	2232	1222	Porcelain Doll Full Bisque Maturity
7	2264	1240.....	Upper end of Stoneware Glaze range
8.....	2305	1263	
9.....	2336	1280	Pottery Glaze Firing (in wood or fossil-fueled
10.....	2381	1305	kilns and reduction atmospheres)
11	2399	1315	
12	2419.....	1326	

Temperatures are based on Self-Supporting Cones at 270 °F or 132 °C per hour rate of increase.

Cone numbers originally started at 1 and went to 20. Each higher cone number requires more heat to bend. Higher and lower cones were developed as demand grew. A zero was added in front of the number for cones maturing at temperatures below the original cone 1. Thus Δ01 needs less heat than Δ1, and Δ020 needs less than Δ019.

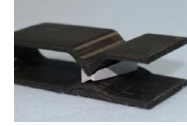
It is important not to mix up the lower maturing cones (these numbers begin with zero) with the higher maturing cones.

— NOTE: Δ06 and Δ6 are not the same! —

MS517 - LRB Cone Plaque



K911 - Cone Splitter



CHS - Cone Holders



CONES & HOLDERS

SRB Junior Cones\$13.20

- Commonly used in the Dawson Kiln-Sitter.
- Tapered shape gives some flexibility in adjusting the shutoff point.
- Can be used as mini witness cones in tight spaces.
- Melt at slightly higher temperatures than SSBs or LRBs.
- Box of 50

BRB..... Mini Bars \$15.00

- Designed especially for the Dawson Kiln-Sitter.
- Uniform shape makes consistent placement easy.
- Box of 50

LRB Large Cones\$17.95

- The original pyrometric cones.
- Used to visually monitor firing progress and heatwork throughout the kiln through viewing (peep) ports.
- **Needs to be supported by cone plaques, clay pats, or wire cone holders (see below).**
- Uniform mounting height & angle is very important!
- We stock cones 012 - 12
- Box of 50

SSB Self-Supporting Cones.....\$13.20

- Preferred for use as witness cones on kiln shelves.
- Most accurate and easiest to use cones available.
- Box of 25

K911..... Cone Splitter for SRB's..... \$2.50

MS517..... 3-Hole Cone Plaque for LRB's \$2.49

CHS Wire Cone Holders (bag of 5)

When you buy ... **1-5 @** **6-11 @** **12+ @**
 \$7.35 \$5.88..... \$5.15

Quantity discounts apply on multiples of the same item